

Intercooler Kit (Front Mount Style) installation procedure for Golf/Jetta III

Warning: The FMIC kit requires some amount of cutting of the lower bumper support in order to clear the larger intercooler assembly. If you prefer to do a non-destructive intercooler installation, you may choose to use P/N:ICS-A3-S2 (The fender mount intercooler kit for the A3).



Parts Checklist:

Provided

- Figure A: Upper outlet pipe
 - Figure B: Lower outlet pipe
 - Figure C: Intercooler assembly
 - Figure D: Lower inlet pipe
 - Figure E: Upper inlet pipe
 - (5) 2" diameter x 3" long silicone connectors
 - (1) 2-1/2" diameter x 3" long silicone connector
- Note: Substitute with a 2-1/2" to 2-3/4" transition connector if engine is OBDI (pre '96)

Not Provided

- (10) hose clamps for 2" pipes (2-1/4" to 2-1/2" range)
 - (2) hose clamps for 2-1/2" pipes (2-3/4" to 3" range)
 - (2) 1/4" coarse thread bolts x 1" long
- Note: Add (1) 3/4" hose clamp for ISV connector if engine is OBDI (pre '96)

Tools Checklist:

- Powered Grinder w/metal cutting wheel
- 13mm socket
- 10mm socket and ratchet
- 10mm combination wrench
- Flathead screwdriver

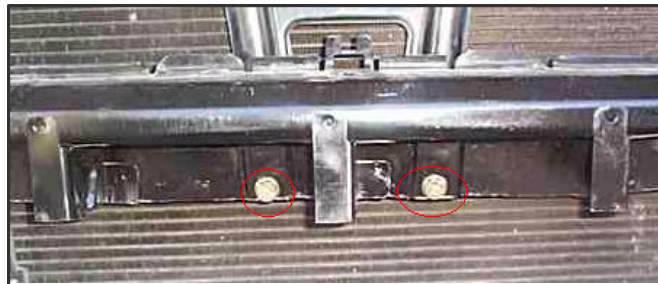
Instructions:

1. Remove grille.
2. Remove headlights.
3. Remove front reflector plates and unplug foglight harnesses.
4. Remove 10 mm bolts and nuts holding bumper cover to bumper support (4 on top and 4 at bottom).
5. Carefully slide bumper cover out slightly.
6. Unplug side bumper light harnesses.
7. Remove bumper cover completely from vehicle.

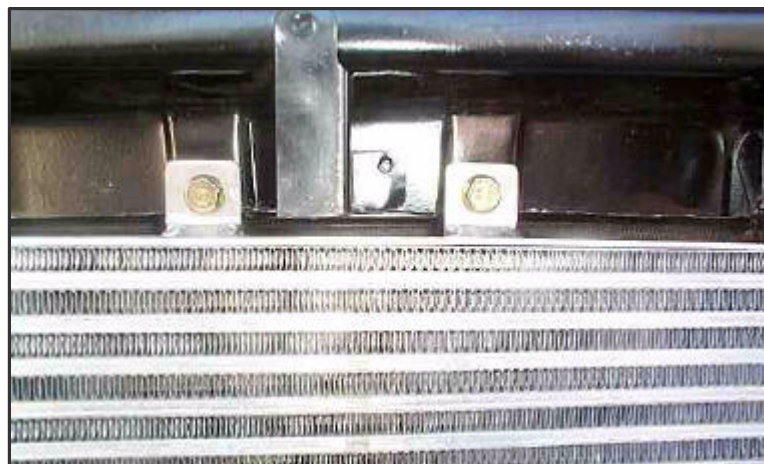
8. Using powered grinder, cut away lower bumper support in the square highlighted below:



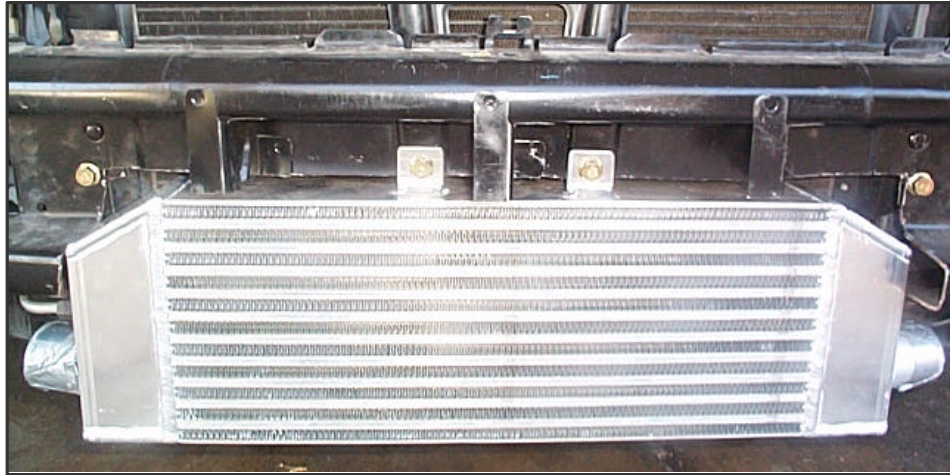
9. Using 13mm socket, unbolt the two support bolts near the center:



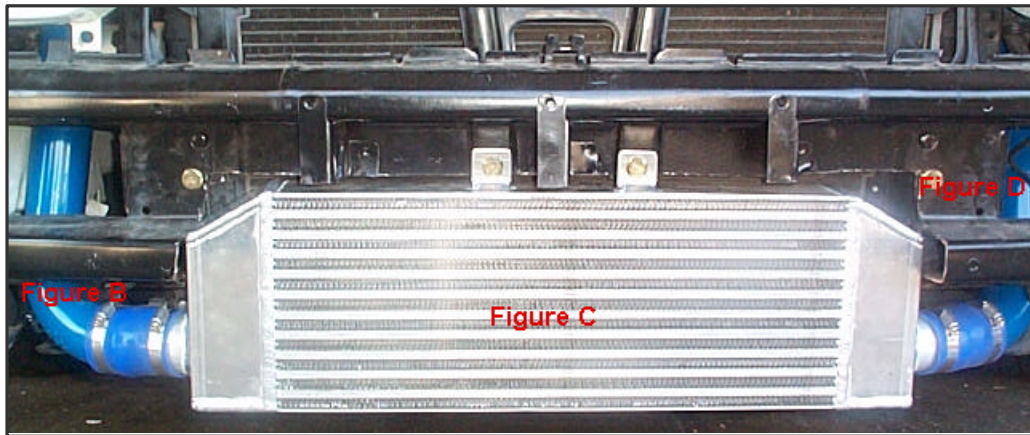
10. Place intercooler assembly bracket by aligning top brackets to open holes from bolts:



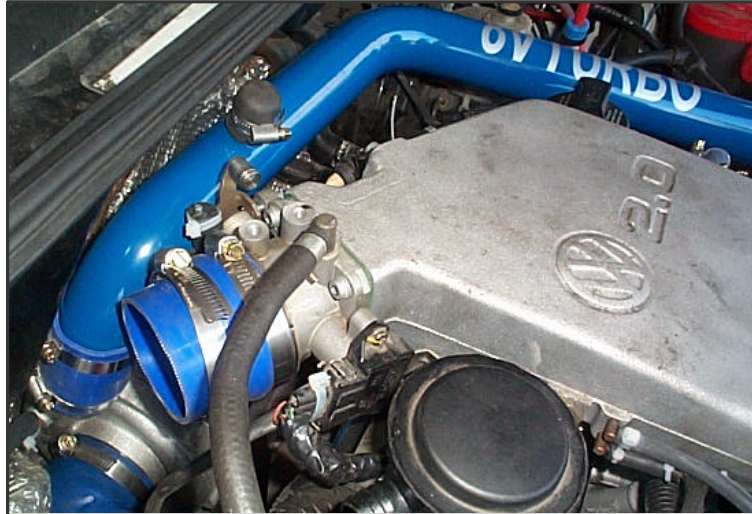
- 11. Reattach the two 13mm bolts and tighten in place to secure intercooler. Intercooler should core should sit flush against radiator:



- 12. Attach lower inlet (figure D) and lower outlet (figure B) to intercooler assembly (figure C):



13. Attach upper inlet pipe (figure E) between turbo compressor outlet and lower inlet pipe.
Note: Cap off nipple with $\frac{3}{4}$ " vacuum cap if installing on OBD II engine. Nipple is only for use on OBD I engines with idle stabilizer.



14. Install upper outlet pipe (figure A) between throttle body and lower outlet pipe:



15. Connect Greddy or HKS Type S blow off valve to pretapped flange use (2) $\frac{1}{4}$ " coarse thread bolts, ensuring gasket is in place. Tee boost line into boost signal on BOV.

16. Trim around the inside of bumper cover to clear intercooler and reassemble in reverse order:

